

Guilfoyle Park Plaza Redevelopment



Update for local businesses

July 2018

Following community consultation and the development of a Masterplan for Guilfoyle Park, works are to be undertaken for the reconstruction of Guilfoyle Park Plaza area at the Bay Street end of Guilfoyle Park. Works include removal of the raised podium and creation of a larger open plaza with new paving, planting, seating and new light poles. The objective of the works is to provide a better functioning and more attractive plaza area for residents, visitors and local businesses. We've written to local residents about the redevelopment and we wanted to keep you informed too.

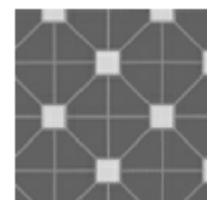
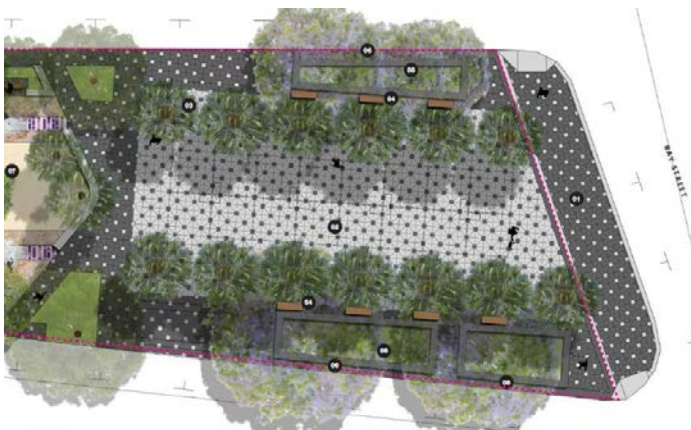
Weather permitting, staged works are scheduled to commence on Monday 23 July 2018 and are anticipated to take twelve (12) weeks.

Stage 1 – Demolition

- Demolition of the paving and podium
- All trees, palms and garden beds will be retained
- Light poles within the paved area will be removed.

Stage 2 – Construction

- A concrete base will be constructed to go under the new paving
- A 'boomerang' shaped seating wall will be built at the western end of the plaza
- A replacement electrical switchboard to be installed at the same location for local events and markets and new electrical outlets will be installed on both sides of the plaza
- An additional palm tree will be planted to match the existing palms, making a colonnade of four trees on either side of the plaza
- New paving to be constructed, matching the Double Bay commercial centre style shown below.



ABOVE: Paving style
LEFT: Design drawings

Double Bay Organic Markets

During the period of construction the markets will continue, however they will be relocated further north in Guilfoyle Park. Temporary parking arrangements will be made for market vehicles and for the coffee van on Guilfoyle Avenue for the duration of the construction period.

Public parking

During the works period only, some changes to current parking conditions will apply to accommodate the works vehicles and relocation of the Markets. For the majority of the construction, the contractor will maintain full traffic flow through the area. However there will be times when drivers will be asked to follow the directions given by the notices, signage and traffic control staff.

Permitted construction hours

Works will be undertaken between the hours of 7.00am – 5.00pm Monday to Friday.

No work is permitted on Sundays and public holidays.

No work is permitted before 7am or after 5pm weekdays.

Construction vehicle movements

A construction vehicle parking zone will be established at the entry into Guilfoyle Avenue to assist the construction activities with deliveries and to alleviate the need for on-street parking for these construction vehicles.

Site management

Council has appointed Design Landscapes Pty Ltd as the contractor to undertake these works.

Thanks for your cooperation

We apologise in advance for any inconvenience these works may cause. The project will be completed as quickly as possible and our contractors will be managing construction noise to minimise the impact on local residents. Your co-operation and patience is appreciated. We look forward to bringing you a revitalised community space that everyone can enjoy.

Your contact



During construction your main contact is:

Troy Thomas on M: 0439 710 010

Project Manager, Design Landscapes Pty Ltd